



WHITBY SIXTH FORM



Prospectus
2020-21



Welcome

Hello and welcome. We hope this prospectus gives you a real insight into the courses we offer as well as our enrichment and employability programmes. If you require further help **or advice then please don't hesitate to talk to a member of the Sixth Form team.**

Whitby Sixth Form is a caring and dynamic college, which aims to enable all students to reach their full potential by providing a broad range of courses and opportunities. Students are able to choose from a range of courses, including A-level and Level 3 BTECS; Level 2 vocational courses and GCSE resits; and our Foundation Learning course. We have an excellent record of ensuring that students progress onto university, into apprenticeships or into employment.

All students are expected to stay in full time learning or training up to the age of 18. Our aim is to provide an excellent facility for all of the students from Whitby and the surrounding area.



Through effective leadership in the sixth form, students have high aspirations, know where they are aiming and feel well supported.

- Ofsted



Why choose us?

The Sixth Form team are based in the Whitby Sixth Form Centre. Their overall objective is to ensure that students reach their potential in their studies and to offer effective pastoral support. The team provides help with the following:

- Applying to the Sixth Form
- Apprenticeships
- Bursary funding
- Careers
- Course levels
- Changing subjects
- Employment opportunities
- Free meals
- Free travel
- Further education
- Gap year
- Learning support
- Personal development
- Revision
- Student finance
- Student loans and fees
- Subject choices
- UCAS
- University advice.

Careers Guidance

As a Whitby Sixth Form student, you will receive excellent guidance and support to help you to achieve success in your learning pathway. So whether you require help in choosing the right course or advise about a particular career path, you will receive high quality guidance to support your individual needs.

Next Steps

Contact the Sixth Form Team via enquiries@sixthformwhitby.org to arrange a visit or to have your particular questions answered.

Follow us on social media:

- Twitter: @whitbysixthform
- Facebook: whitbysixthform
- Instagram: sixthformwhitby

Courses we Offer

A-Levels

Fine Art

Drama & Theatre Studies

English Literature

History

MFL

Physics

Biology

Electronics

Geography

Maths

Music

Sociology

Chemistry

English Language

Graphic Communication

Further Maths

Philosophy & Ethics

Level 3/Cambridge Technical Courses

Applied Human Biology

Health & Social Care

Psychology

Business

Law

Sport

Creative Media

Applied Mathematics

Level 2 Courses

Customer Services

Learning for Progress

Hairdressing

Make-up Artistry

Level 1/Entry Level

Foundation Learning Programme



Meet the Team

Susan Boyd

Vicki Verrill

Julie Mastrodonardo

Jo Raw

Trudi Lowe

Kit Wright

Gail Mackle

Joe Daley

Martin Colclough

Head of Sixth Form

Director of Learning: Post-16

Director of Learning: Year 12

Director of Learning: Year 13

KS5 Learning Manager/Pastoral

UCAS co-ordinator

Careers Advisor

Sixth Form Mentor

Work Related Learning co-ordinator

Coaches

David Almond

Jon Gower

Kirsty Brown

Gail Mackle

Martin Colclough

Kit Wright



We've got your back

The intervention system that we operate will enable you to reach your full academic potential. It is designed to motivate you by giving you extra guidance and targeted support.

Monitoring takes place three times per year in the Sixth Form and, after each round, the Sixth Form team will let you know you are on track for meeting your targets.

Teachers of the relevant subjects will be informed and your parents will be notified by letter. We aim to open up a three-way discussion between you, home and College to provide the most appropriate support to best meet your needs.

If you are on the intervention system, you will be assigned to a Sixth Form Coach whose responsibility will be to meet with you and your parents to identify any possible issues and put in place an action plan to improve your performance in a particular subject(s). Lesson observations may also take place in order to inform an action plan. A coaching meeting is likely to take place every one or two weeks through which your progress will be monitored.

Coaching will be ongoing until your monitoring grades improve. For some students, this may happen quickly; for others, the intervention may be ongoing for a longer period of time.

ULTIMATELY WE WANT YOU TO SUCCEED!

Expert Careers Advice

Careers advice can be booked via Mrs Mackle in the Careers and Employability point.

16 – 19 Bursary

A limited amount of funding is available to help any student who may face financial barriers to participating in Sixth Form studies. We have set the threshold for eligibility at a household income of less than £26,000. Agreed standards of behaviour and attendance must also be met. For more information and an application form, please contact Ms Lowe in the Sixth Form Office.

Make it fun

The focus of Year 12 is on 'Enrichment' opportunities.

Why? In this day and age, you need more than just academic grades to progress, whether applying for a job, an apprenticeship or university. This programme is designed to develop, not just your leadership skills, but also lots of other qualities that potential employers and universities are looking for.

You can sign up for one of the following courses:

Duke of Edinburgh Award

Teachers for the Future (T4tF)

MOOC (Massive Open Online Course)

EPQ – Extended Project Qualification

Student Leadership Team

Work experience opportunities:

KS4 mentoring

KS4 tutor group support

KS3/4 classroom support

Extra-curricular club and activities

Self-supported work experience.

Fitness and Sport opportunities:

Sports teams' practises and matches

Discounted membership to Whitby

Leisure Centre.

Enrichment is viewed as a compulsory part of your overall Sixth Form programme and is monitored through attendance, like any other lesson.

Enrichment Options in the Sixth Form

A successful enrichment programme will promote the life-skills needed for everyday life, **develop "soft skills" that employers and universities look for, while also giving you the opportunity to find out more about your interests and passions.**



Coaching - this will give you the opportunity to help coach KS3/KS4 students. You will work closely with a set of students throughout the year to help them in their learning. You will receive training for this that will look excellent on any job or university application.

Work Related Learning - this is giving you the opportunity to gain a qualification that is not in the curriculum. For example: health and safety in the workplace, first aid at work, principles of safeguarding. If you know your chosen career or not, this is a great opportunity to get more qualifications on your CV, and there are over 30 options to choose from!

Work Experience - this will allow you to gain skills in the workplace of your choice. This is mainly for a job you are interested in and, if you are struggling to find a placement, there are people in the College who can help.

Sport and Fitness Ambassador - this will allow you to promote fitness around the College, officiate matches, run clubs and partake in sporting activities. This will improve your leadership, organisation and confidence skills.

Student Leaders - as a student leader you will help shape the future of the sixth form by reviewing policies such as uniform and the curriculum. As well as representing the sixth form at open evenings, you will help to organise charity events, student events and fundraising. This will be your opportunity to show your leadership abilities and will look excellent on any job or university application form.

It is hoped that by participating in the College's Enrichment Programme, you will leave the College with a much more 'rounded' education and experiences that will help you in the future.

The Enrichment Programme will be explained to you during the first weeks in September, after which you will be able to make your choice and sign up.

Higher Education Days, UCAS & Careers Advice

Help, support and advice are available for students throughout the UCAS registration process for those applying to higher education. We also arrange a visit to a UCAS conference so that you can find out more about university life and the full range of subjects available. A comprehensive range of resources are available to students wanting to research careers, higher education and gap year options, in the Learning Centre.

Duke of Edinburgh Award

All Year 12 students are encouraged to participate in the Duke of Edinburgh's Bronze Award or beyond. Since it began in 1956, the scheme has aimed to help young people

plan and undertake different activities to develop them mentally, physically, emotionally and spiritually. It aims to provide young people with an enjoyable, challenging and rewarding programme of personal development of the highest quality and the widest reach. There are three levels to the award – bronze, silver and gold. Each level has four specific areas – service, skills, physical recreation and expeditions. The Duke of Edinburgh's Award is widely recognised by employers and people involved in education. Some of the benefits to young people include:

- developing self-confidence and self-reliance
- gaining a sense of achievement and a sense of responsibility
- discovering new skills, interests and talents
- developing leadership skills and abilities.

Driving

The Driving Standards Agency visits the College to help students to prepare for their driving tests and increase awareness of road safety. We also organise, through North Yorkshire County Council, a set of workshops showing the effects of road accidents and the roles of the public services they affect, such as the Fire Brigade, Police and Ambulance services.



It's a powerful workshop which carries a hard-hitting message.

Fund Raising

Fancy getting involved with raising money for charity? Sixth Form students have helped to generate significant sums of money through a range of fund raising activities at the College. Some interesting fancy dress costumes, coupled with jangling buckets usually dominates the proceedings! Last year, Sixth Form students helped to raise over £4000 for charities including: Children in Need, the Shoe Box Appeal, Help for Heroes, and many more. Ideas can also be put forward through the Student Leadership Team.



Sport

The Sixth Form has many different sports teams, and students regularly partake in competitions for sports including: netball, football, hockey, cricket, rugby, rounders and tennis. The College also has regular fixtures against local teams.

Trips

There are several day trips and residential trips available to Sixth Form students, ranging from outings to art galleries and sculpture parks to geography field trips, a tour of the amazing art galleries in Paris, a musical exchange to France, and a trip to Auschwitz to gain a better understanding of the horrors of the Holocaust.



FAD

Q. How do I know which subjects to choose?

A. It is always best to choose those subjects that you enjoy and are likely to do well in. You also need to check that the subjects you choose will allow you to apply for the next course you want to do, either at College or University, or will be suitable for the job you want to apply for.

Q. Will I have a free choice of Level 3 courses?

A. Up to a point:

- if your grades at GCSE indicate that you would not pass a selected level three course, we will not recommend that you start it for your own sake. Mrs Mackle will be available to give you advice or assist you with an application to another provider.

Q. How do I know which are the best subjects to choose?

A. You need to start your research early, as many universities have highly-competitive entry criteria. Kit Wright and Gail Mackle can help you navigate the information out there.

Q. How much time will I study in the Sixth Form?

A. You should expect to have an average of seven/eight hours taught or tutored time for your main subjects, per cycle. You can expect to have up to four sessions of directed study time, per subject, per cycle.

Q. Will I be entitled to free transport?

A. YES - free transport will be available for Sixth Form students.

Q. Does advertising a course in the prospectus mean it will definitely run?

A. Not always. If a course does not recruit sufficient numbers then we may run the course with fewer lessons, or we may have to cancel the course in some circumstances.

Q. What BTEC and Cambridge Technical courses will be offered?

A. At Level 3 - Business, Sport Studies, Applied Science, Psychology and Law.

Q. What if I don't do well at GCSE?

A. You can choose to join an L4P course (Learning for Progress) and re-take your GCSE English and Mathematics, along with attending a work experience placement. On completion of the L4P courses, you must ensure you have five GCSEs for progression onto our Level 3 courses.

We also offer a Level 2 Customer Services course with work experience and a foundation learner course.

Applied Human Biology

BTEC
Level 3

This course would suit you if you have an interest in how the human body works and the range of health issues that affect us.

You will study units including:

- principles of applied human biology
- practical microbiology and infectious diseases
- human biology and health issues.

Learners who complete this qualification are able to go on to study a wide range of subjects in further and higher education, including biomedical sciences, sports science, nursing and other science and health-related subjects.

The two year BTEC Level 3 National Extended certificate is equivalent to one A-level. You will be assessed by means of a 1.5h written exam for Unit 1, a controlled assessment for Unit 3 and by a series of assignments for Unit 2 and the optional unit.

If you are interested in developing your practical skills and finding out how we can apply knowledge of human biology to solve relevant, real-world problems this could be the course for you.



Biology

A-level

What will I study?

You will explore biology in a hands-on way and discover how all living creatures interact in an ecosystem. You will cover topics exploring how cells, DNA and gametes make us what we are, to the structure and function of the heart. The course is delivered by experienced staff who have a real passion for the subject and want to ensure that you succeed.

What do students do afterwards?

You might choose to move on to study a related science degree at university, with a view to securing a job in medicine, child care or research, among others. Other former students have pursued careers in nursing, dentistry and biochemistry, as well as more diverse careers like accountancy.

How will I be assessed?

100% exam at the end of the course.

What can I do to prepare?

Talk to your peers and relatives who have studied biology at the College recently, or come and speak to any of the science team - we are happy to help.



“ I have really enjoyed studying Biology. I have found learning about human anatomy particularly interesting, as you can form many links between mechanisms. - Hermione ”

Business

BTEC
Level 3

What will I study?

Do you have the drive and ambition to manage a business, or ooze enthusiasm to become an entrepreneur? Are you creative enough to market worldwide products or organised enough to **manage a business's finances? If so, then a course in business may be the right option for you.** A business course at CCW will guide you to understand the ins and out of businesses, exploring how different factors can test a business and push them to succeed. You will create a marketing campaign for a large business of your choice, that someday may become a reality, and work with worldwide companies to investigate their finances. The units that you will cover are the core to any successful business and, one day, you could be the successful business that students are investigating. This course encourages independent learning, and with one-to-one support, passionate teachers and real business scenarios, you will develop the skills and knowledge to become successful in any work place.

What do students do afterwards?

Many business students guarantee themselves a place at university by studying a business course. A Level 3 qualification in business is recognised in most universities. If university is not the place for you then there is always the option of a higher apprenticeship. BTEC business students have, in the past, landed themselves an apprenticeship in top businesses, such as KPMG and PWC, and more and more businesses are taking on apprentices who have a business background.



How will I be assessed?

Units 1 and 22 – internally assessed (coursework);

“I really enjoy learning the content, it has been interesting and good to know. The lessons are enjoyable and the course is teaching invaluable knowledge and skills I may need in later life.” - Kiera

Chemistry

A-level

What will I study?

I wanted to start this section with a joke, but all the good ones Argon! If you sniggered to yourself, then you are the candidate for us. Chemistry is the science of materials, from the simple covalent molecules in the air to the oil-derived polymers in your phones and tablets - we cover it all. You will supplement your learning with a rigorous series of practical investigations, leaving you ready for a future career in science - or any other vocation where being methodical and organised is important.

What do students do afterwards?

In recent years, our students have taken places at top universities to study medicine, veterinary, engineering, as well as chemistry and material science courses. An A-level in chemistry is well regarded by employers too, as it shows you have the commitment to succeed on a challenging course, and a great capacity to learn.

How will I be assessed?

100% exam at the end of the course.

What can I do to prepare?

Talk to other students who are already doing chemistry. If you currently study combined science, **it's not a problem, it's been done many times before.** If you are worried about it, **get in touch with the science department.**



“Learning A-level Chemistry has revealed a greater depth to the complex mechanisms we utilise in industry. I have found that it is very interesting to anyone wanting to know more about industry and engineering in general.”
- Killian

Creative Media

BTEC

What will I study?

Creative Media is an exciting and challenging course which encourages you to critically engage with and evaluate a broad range of moving image products. The course is designed to provide an educational foundation for a range of careers in the media industry and allied sectors. Students will spend time looking at web design, the languages used and how information can be manipulated and presented.

What do students do afterwards?

In the past students have gone on to apprenticeships in web design, or further study at university looking at media studies, digital media or courses that help to prepare for website design and journalism.

How will I be assessed?

Through a combination of internal assignments and external exams.

What can I do to prepare?

Spend some time looking at web design and thinking about how information you access has been presented.

Talk to people who have studied

the course in previous years and ask them for feedback on what skills they have developed.



Business, Enterprise and Customer Services

What will I study?

You will develop the skills to be an effective customer service deliverer. Alongside your studies, you will complete compulsory work experience that will enable you to gain first hand skills and experience in a customer service environment.

The course has been developed in consultation with employers in the customer service sector to ensure it enables learners to acquire the skills and behaviour that will give them the best opportunity to be successful when applying for work.



What do students do afterwards?

There are many opportunities for you to go after completing this course that include apprenticeships around customer service or moving onto a level 3 course.

How will I be assessed?

Unit 1 – Exam

Unit 2, unit 3 and unit 4 – Coursework

What can I do to prepare?

If you already have a job, you can start to examine what makes an excellent customer service deliverer and how you would best meet the needs of the different types of customers. You may also want to think about how your needs are met when you purchase products or services from a business.



When we started Virgin Atlantic 30 years ago we had one 747 and we were competing with airlines that had an average of 300 planes each. Every single one of these airlines have gone bankrupt because **they didn't have customer service. They had might but not customer service.** Customer service is everything in the end.

- Richard Branson



Drama & Theatre Studies

A-level

What will I study?

If you enjoy working practically and solving problems then drama and theatre may be for you. If you take drama and theatre at A-level you will create unique performances, you will put yourself in **a director's shoes and work on a variety of plays and performance projects. You will go to the theatre and build your skills as both a critic and play-maker. You will discover just 'how magical' the theatre is and how new practitioners are shaping the stage today following in the footsteps of the great names of our stage and theatre world, such as Brecht, Stanislavski, Artaud.**

What do students do afterwards?

Past students have gone on to tread the boards, to present on live radio and appear in film, adverts and video. Others have chosen to study Theatre at places such as The Central School of Speech and Drama in London and LIPA taking performing arts, such as dance, or perhaps you just want to study an A-level that will give you confidence and resilience, making you stand out in a crowd in a highly-competitive world. Whatever your reasons, drama is also accepted by universities, providing UCAS points for your next step in education.

How will I be assessed?

20% theatre workshop; 40% performance, supported by written process and evaluation; 40% written exam.

What can I do to prepare?

If you haven't done GCSE drama, no worries. In the first term, you will quickly develop your skills and be ready for your drama and theatre journey. Talk to other drama

students, come along to Drama Club, get involved in your local amateur dramatics company, go to the theatre, watch film, write, and come and have a chat with the friendly drama staff. As **Shakespeare said, 'All the world's a stage and we are but players...'**



“Doing A-level drama at Whitby Sixth Form allows you to work closely with your teacher. Drama is a practical based subject, however, it does include written work in the forms of exams and coursework, yet although written work is something I struggle with, I feel like this aspect to A-level drama **doesn't make me love it any less.**” - Rose

English Language

A-level

What will I study?

English Language students learn how our language works, as well as the power behind those words. Students will consider the impact of gender, age, technology and geography **upon our language**. **You'll never listen to rap lyrics or a Donald Trump speech in quite the same way again!** Our students also write creatively, producing their own original writing for coursework. So if writing blogs, stories or articles is something you are interested in, English Language is for you.

What do students do afterwards?

Our students leave with an outstanding understanding of how and why humans communicate in the way we do, giving them routes into a range of careers including the media and journalism, as well as psychology, sociology and nursing. English Language is about communicating with others and some of our alumni now work within the arts such as the fashion brand Lulelemon, teaching dance in Dubai and working as journalists for Sky and Channel 4. The ability to use and understand language can take you anywhere!

How will I be assessed?

80% exam; 20% coursework.

What can I do to prepare?

Talk to other students who are already doing the course and ask them what they have done or wish they had done. Read widely; anything that takes your fancy and inspires you to think and discuss.



“English Language is a really interesting A-level subject; you learn about the history of language, and how social factors such as age and ethnicity influence your language use .” - Lucy

English Literature

A-level

What will I study?

Words matter. Wars are started over them. Great love affairs happen because of them. Studying English literature will give you the chance to read, think and discuss. In a world filled with 140 characters, Instagram and Snapchat, how often do you get the chance to fully absorb yourself in a good book? **From Dracula to The Handmaid's Tale, A-level literature** is about amazing novels, poems and plays. Through these great literary texts, students get to grips with a range of texts covering a range of important issues, helping them to think about the world around them and to question and consider everything. Our students are often creative writers, as well as enthusiastic readers and participate in a range of literary competitions. In addition, students will have access to a range of exciting theatre trips.

Literature that changes our world. Join us on the journey!

What do students do afterwards?

Last year, 100% of our students gained a grade C or above; 66% gained A/A* grades. Students have gone on to study English Literature, History, Psychology and Media-based degrees. Some are enjoying careers in the media, such as SKY and Channel 4 and others are continuing their studies at top establishments such as Oxford University.

How will I be assessed?

80% exam; 20% coursework.

“ I find English Literature a challenging but interesting subject. We have learnt about tireless novels such as Dracula, and classic plays such as Hamlet. The teachers make it exciting and easy to understand. - Isobel ”



What can I do to prepare?

Talk to other students who are already doing the course and ask them what they have done or wish they had done. Read widely; anything that takes your fancy and inspires you to think and discuss.

Fine Art

A-level

What will I study?

Are you able to see the beauty and emotion in the world around you? Do you enjoy drawing, sketching and photography? Do you love to experiment with new techniques and styles of art? If you decide to study art, you will build on the skills you have learned in art GCSE, as well as learn some new techniques and approaches. We have a range of equipment across the department for you to access such as a kiln for clay work, screen printing equipment, dark room and cameras, laser cutter, glass-fusing kiln and a 3D printer. You will also have your own base room and desk, to be able to work independently during your study periods. No need to book in or hot desk!

What do students do afterwards?

We have helped students study at some of the most prestigious universities in the UK, including Leeds, Chelsea, Glasgow, York and Falmouth. These students study a variety of disciplines in the art and design world, including art foundation studies, fine art, sculpture, film, illustration and photography. We have many students who have gone on to have successful careers in the competitive art and design world as textile artists, photographers and architects.

How will I be assessed?

60% personal investigation

“Art is a wonderful subject at A-level as there is so much scope for you to choose what you want to study, which artists you want to focus on, and which media you use. I most enjoy being able to create really detailed portraits, and, as the facilities have so much space, we can have our own **stations.”** - Pippa



What can I do to prepare?

Have a look at some of the work exhibited around the College or ask your teacher to show you some of the work students have produced on their Year 12 and Year 13 fine art courses. Talk to some of our students too - **they'll fill you in** on what they enjoy most about the course.

Geography

A-level

What will I study?

Geography is the eyes of the world - we see so many things in our daily lives and often appreciate our surroundings without understanding how interconnected our world is. A-level Geography aims to allow us to see more clearly how our lives are affected by the environment and development of countries. Understanding the risk of buying a home near a river; of how quickly Hurricane Irma devastated the Caribbean and the aid needed to help, or to simply gaining an awareness that migration will continue and increase as our world moves towards ten billion people.

What do students do afterwards?

Geography at Caedmon College teaches more than just A-level, we aim to give you the research skills to be successful at university, bridging the gap between your college and university education. The world in which we live is likely to change more in the next fifty years than it has ever done before. Geography explains why, and helps to prepare you for those changes.



The transferable skills which geography fosters are an asset in the complex world of employment today. Geography is about the future and encourages flexible thinking across topics such as hazards, international development, coastal system and carbon cycles; geographical studies fosters these qualities and provides a firm basis for life-long learning. Geography involves **the study of both natural and social sciences; it is seen as the 'bridge' between the sciences and the arts**, leading to degrees in human or physical geography or geo-sciences, and employment ranging from marine biosphere conservation to town planner and tourism.

For further information please speak to Mr Wigglesworth or see our specification on the AQA website (7037) <http://www.aqa.org.uk/subjects/geography/as-and-a-level/geography-7037/specification-at-a-glance>

Geography is an inspiring course that covers both the human and physical aspects of the subject. You get to experience a range of exciting and beneficial trips, such as central London and the east coast. You get to study different locations in the UK as well as previous and current climate issues which I find particularly interesting. - Emma

Graphic Communication

A-level

What will I study?

Do you have flair for visual language? Do you notice how colours, images and information work together? If you decide to study graphic communication you will develop your skills learned in art in sketching, photography and drawing, as well as learn how to use industry-used programs such as **Photoshop and Illustrator**. You will create imaginative and “real world” advertising, websites, packaging and more for anything from pet food, children’s books and charitable organisations, to sports brands and video games.

What do students do afterwards?

As well as a clear link into diplomas in graphic design, some of our students have gone on to study many disciplines in the art and design world including art foundation studies, illustration and photography. From our end of Y13 Pannett Gallery exhibition, some students have been approached to produce work in a freelance capacity, and to apply for apprenticeships. Many visitors who have seen our work comment on the professional outcome - a fact that has impressed tutors during university interviews too.

How will I be assessed?

60% personal investigation; 40% externally set task.

What can I do to prepare?

Have a look at some of the examples around the College or ask your teacher to show you some of the work students have produced in Year 12 and Year 13. Talk to some of our students too.

They'll fill you in on why they enjoy the course.

“Studying graphics is really interesting as you develop your ideas from a sketch into a whole manner of outcomes such as posters and t-shirts. Graphics also teaches you the stages designers have to go through to better their work on all different types of software like **Photoshop”**
- Cerys



Hairdressing

BTEC
Level 2

Hairdressing - Level 2 Certificate For Hair Colouring Services

Learn how to mix and apply colour using the in salon techniques

What will the course involve?

You will cover the range of essential practical skills and knowledge which will help you get a job in a salon as a Junior Colourist.

- communication and advising clients and safe working in the salon
- colouring and lightening hair – semi, quasi and permanent, toners, lighteners
- colouring to achieve a variety of looks
- types and classifications of hair and the structure of hair
- perming and neutralising
- styling and finishing – creating volume and movement, rollering, spiral curling, setting

Entry requirements

You must have a keen interest in the industry, want to work with people and have excellent attendance.

You must meet deadlines and be committed to your course.

GCSE maths and English grade 4+ is preferred. If you do not hold a 4 or better in English and/or maths you will be required to study these further as this is part of the course.

You must attend a work experience placement each week, you will take part in enrichment activities including competitions and additional courses.

Equipment

You will need a kit and uniform which we will explain at interview. If you are worried about paying towards a kit and uniform please talk to us and we can see if you can get a bursary.

Assessment

Practical assessment on clients in our training salons and questions in class.

You will complete some assignments and may need to work towards Functional Skills or GCSE.

You will take an end of year exam.

General comments

You will need to ask friends and family to come in so that you can practice and do practical assessments. We will invite you to taster sessions and give you an advice and guidance interview before you start the course to make sure this is the correct route for you and allocate any support.

What will the course lead to?

You could progress onto a Level 3 apprenticeship or you may wish to do barbering or beauty therapy. Another option is to work on cruise liners or further qualifications could lead to teaching/assessing and onto a degree.

Health & Social Care

Cambridge Tech.
Level 3

SINGLE OR DOUBLE AWARD

What will I study?

Have you always wanted to work with people? Does nursing or teaching interest you? Do you want to work in the biggest employment sector in the UK? Do you have good communication skills? Are you a caring individual? Do you get enjoyment from helping others?

Health and social care is available as a single and double A-level equivalent, students study a wide range of topics, assessment depends on the topic studied.

Units of study examples

Building positive relationships in health and social care - coursework; equality, diversity and rights in health and social care - exam; anatomy and physiology for health and social care - exam; nutrition for health - coursework.

What do students do afterwards?

Students have gone onto study a wide range of university courses, ranging from child nursing, midwifery, social work and psychology. 95% of our students go on to study at degree level.

How will I be assessed?

Assessment is a combination of written exams and coursework; 45% exam, 55% coursework.

What can I do to prepare?

Volunteer in a Health and Social care setting.



Studying Health and Social Care has enabled me to have a greater understanding of topics such as safeguarding, health and safety, equality and diversity. These topics are important to me as I am going on to study Primary Education. - Amelia



History

A-level

What will I study?

History is packed full of the greatest characters you could ever wish to see on the TV or stage and they don't get any bigger than Henry VIII or more fascinating than the colossal struggle during the cold war between the leaders of America and Russia. Immerse yourself in the sixteenth century with the Tudors and use the cold war to help you to understand the state of the world today. All of the course is brand new learning and is accessible to anyone with a willingness to learn and a passion for the past!

What do students do afterwards?

In recent years, our A-level history students have gone on to study a wide variety of subjects including history (of course!), Egyptology, archaeology, teaching or any other degree course.

How will I be assessed?

80% exam at the end of the course, with 20% of coursework completed between Years 12 and 13.

What can I do to prepare?

Talk to other students who are already doing the course and ask them what they have done or wish they had done. Come and talk to one of the teachers who will be happy to discuss the content and style of learning in more depth. Send us an email if you can't come and see us. Read some history - any period; reading relevant books is always good preparation.



“History is a fascinating subject that explores how the world was and how it has changed over time. I particularly enjoy learning about the Tudor dynasty and how they have shaped Britain as we know it!”
- Gabriella

What will I study?

The titanic struggle between good and evil comes alive on the page when studying law. Well, sort of. Every aspect of our lives is governed by the government and the system of laws which exist and BTEC law will help you to understand this. If you enjoy legal programmes, police programmes or politics then this course will help you develop and understand.

“BTEC Law is an interesting subject in which we are able to look into the legal system and see how laws that affect our everyday lives are conceived and put into practice” - Kheda

What do students do afterwards?

BTEC law students have acquired apprenticeships with local law firms, gone on to study law in many universities around the country, or used the qualification to access courses such as physiotherapy, English, sport, primary teaching... The possibilities are endless.

How will I be assessed?

By both internal and external assessment. One exam in Year 12 and another in Year 13. The external exams are based on pre-released material while the assignments use materials covered in lessons.

What can I do to prepare?

Talk to other students who are already doing the course and ask them what they have done or wish they had done. Come and talk to one of the teachers who will be happy to discuss the content and style of learning in more depth. Watch some cracking TV programmes like ‘How to get away with Murder’, ‘Suits’ or ‘The Night of!’



Make up Artistry

BTEC
Level 2

What will the course involve?

You will cover the range of essential practical skills and knowledge which will help you get a job in the make up industry or go onto further training:

- communication methods, sales opportunities and support working in make up
- anatomy and physiology – bones of the face and skull and layers of the skin
- researching, planning and showcasing designs – sourcing inspiration for designs, researching looks, influence of historical looks and global cultures
- producing a portfolio and showcasing make up designs
- applying make up – skin types and colours, colour wheel, products and tools
- photographic make up – camera lighting and adapting for the location/weather
- hair artistry – styling using products, tools, styling for different occasions eg prom
- creative make up – special effects eg cuts and bruising, face art, working to a theme.

Entry requirements

You must have a keen interest in the industry, want to work with people and have excellent attendance. You must meet deadlines and be committed to your course.

GCSE maths and English A - C grade is preferred. If you do not hold a C in English and/or maths you will be required to study these further as this is part of the course.

You must attend a work experience placement each week, you will take part in enrichment activities including competitions and additional courses.

Equipment

You will need a kit and uniform which we will explain at interview. If you are worried about paying towards a kit and uniform please talk to us and we can see if you can get a bursary.

Assessment

Practical assessment on paying clients in our training salons and questions in class.

You will complete some assignments and may need to work towards Functional Skills or GCSE.

You will take an end of year exam.

General comments

You will need to ask friends and family to come in so that you can practice and do practical assessments. We will invite you to taster sessions and give you an advice and guidance interview before you start the course to make sure this is the correct route for you and allocate any support.

What will the course lead to?

You could continue your studies in make up artistry or study beauty therapy or hairdressing further. Another option is to work in the industry or get an apprenticeship and gain further qualifications which could lead to teaching/assessing and onto a degree.

Maths

A-level

What will I study?

Do you have a flair for algebra? Do graphs get your pulse racing? If so we can help you to become a proper mathematician. If you take maths at A-level, you will build on many GCSE topics such as surds, circle geometry and sequences, as well as meeting many new topics. You will also study applied maths content in statistics and mechanics. Details about the course content are on Gmaths28.wordpress.com on the information webpage.

What do students do afterwards?

In recent years, our A-level maths students have gone on to study a wide variety of subjects **including maths, science and engineering. We've also had students entering degrees in law and business** or apprenticeships. Maths A-level is really well regarded by universities and employers. See the display posters in the maths department for an idea of the variety of student destinations

How will I be assessed?

100% by three written exam papers at the end of the course.

What can I do to prepare?

Talk to other students who are already doing the course and ask them what they have done or wish they had done. We will give you a full bridging programme when you finish your GCSEs and we can help you with any bits you are stuck on.

“Studying Mathematics at A-level is a subject that provides a multitude of essential skills for further life. It is incredibly challenging and a brilliant subject to study.”
- Jayden



Further Maths

A-level

What will I study?

Students taking Further Mathematics overwhelmingly find it to be an enjoyable and rewarding **experience. In fact they often say it's their favourite subject!** For someone who enjoys mathematics, it provides a challenge and a chance to explore new and/or more sophisticated mathematical concepts. Students who take further mathematics find that the additional time spent studying mathematics boosts their marks in single A-level mathematics.

What do students do afterwards?

If you are planning to take a degree such as engineering, sciences, computing, finance/ economics, etc, or perhaps mathematics itself, you will benefit enormously from taking further mathematics, at least to AS-level. AS further mathematics introduces new topics such as matrices and complex numbers that are vital in many science, technology, engineering and mathematics (STEM) degrees. Students who have studied further mathematics find the transition to such degrees far more straightforward.

How will I be assessed?

100% exam at the end of the course.

What can I do to prepare?

Talk to other students who are already doing the course and ask them what they have done or wish they had done.

Further reading

[https://successatschool.org/advisedetails/186/Why-Study](https://successatschool.org/advisedetails/186/Why-Study-Maths%3F)

[-Maths%3F; http://www.mathscareers.org.uk/](http://www.mathscareers.org.uk/) and <http://furthermaths.org.uk/>



“Further Mathematics is a challenging yet rewarding subject. I personally found the statistics module interesting as it builds on normal A-level Mathematics and can be applied to a lot of degrees and careers.” - Matthew

Modern Foreign Languages

A-level

Why study a language at A-level?

Because although it is hard work, it's also fun! Learning a language in greater depth is very rewarding and can lead to fantastic opportunities in travel and cultural and social situations.

What will I study?

You'll learn the French or German language and discover its culture - from media, popular culture and social issues, to sport, leisure and family life, to science technology and the environment. You will also study a book or a film. Our specialist language teachers will support you to develop the skills you need to master your chosen language. There is also the possibility to travel to France or Germany as part of your course at Whitby Sixth Form.

What do students do afterwards?

You can go on to study French/German at university and find work in teaching, translating, travel and tourism or any one of the many sectors in business. Employers in every industry value linguistic skills. So combining an A-level language with a subject such as business, law or history, to name a few, will give you much more choice when it comes to choosing your career.

How will I be assessed?

100% exam. In a language A-level you will develop your skills and be assessed in listening, speaking, reading and writing. You will become good at comprehension, essay writing, translating and summary skills.



Studying German at A-level is hard work but very rewarding. I can now say almost anything I want to in German and I am planning to teach English as a foreign language abroad next year. Mrs Herbert prepares us well for the exams we do.



Music

A-level

What will I study?

Do you love singing or playing music? Do you enjoy writing your own songs or creating your own music? Do you enjoy listening to and discussing a wide range of music? Music A-level is the course for you to help to become a confident and creative musician. You will further develop your practical skills through the many performance opportunities we offer. You will also study and analyse a range of music, from symphonies to rock and pop.

What do students do afterwards?

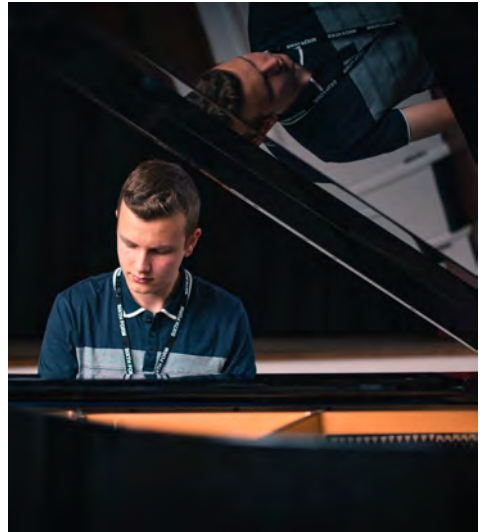
The majority of our A-level music students have progressed onto music or arts-based courses, at **university or Conservatoires**. **We've also had students go on to study a range of other subjects**, like maths and science. Music A-level is highly regarded by all universities as a subject that is rigorous, both academically and practically.

How will I be assessed?

30% performance (recital); 30% composition portfolio; 40% exam at the end of the course. Note: At A2, you can choose to specialise in performance (35%).

What can I do to prepare?

Get involved in as many musical activities as you can - bands, writing and listening to music. Talk to Mrs Beattie or any of the peripatetic teachers or students who have taken the course. We will give you a full bridging programme when you finish your GCSE course and we can help you with any bits you are stuck on.



After studying music at CCW I went on to gain a first class degree in the subject. This has enabled me to successfully pursue a career I am passionate about and simply love.

- Abigail



Physics

A-level

What will I study?

No computers, no internet, no smartphones. The digital age as we know it would not exist. Modern physicists have been responsible for some of the greatest achievements of our era.

By studying **A-level physics, you're setting out to understand and explain the entire universe!** It's a pretty ambitious task, but one that physicists everywhere are constantly striving to achieve, from the smallest particles in existence to the great expanse of space.

Boys and girls - if you love science and are excited to enter the world of science, technology, **engineering and mathematics, don't let anything put you off.**

What do students do afterwards?

Why do our students study A-level physics? It could be for the income, the future prospects or the sheer intellectual stimulation.

Whatever your reasons, you can progress to university to study a degree in a STEM (Science, Technology, Engineering and Maths) subject. Physicists are highly regarded for their problem-solving skills in real life contexts. So, this qualification **is extremely useful, even if you're planning to follow a different career path.**

Students who have studied physics at this College have gone on to study and work in careers such as engineering, instrumentation, medicine, architecture, computer science, games design, architecture, healthcare, forensics, music technology and many more!

How will I be assessed?

100% exam at the end of the course.

What can I do to prepare?

Talk to other students who are already doing physics and ask them what they have done or wish they had done. Teachers in the Science Department are there to help you and give you information and advice.



“Physics is a great subject that can open up many opportunities in the future.” – Aiden

Philosophy & Ethics

A-level

What will I study?

Our A-level in Religious Studies: Ethics and Philosophy provides a coherent and thought-provoking programme of study. Students will develop their understanding and appreciation of religious beliefs and teachings, as well as the disciplines of ethics and the philosophy of religion. Be prepared to ask, explore and discuss lots of interesting questions.

What do students do afterwards?

Thinking philosophically requires rigour, precision and creativity; qualities that can then be applied to any other problem.

Careers where a study of this subject may be useful include:

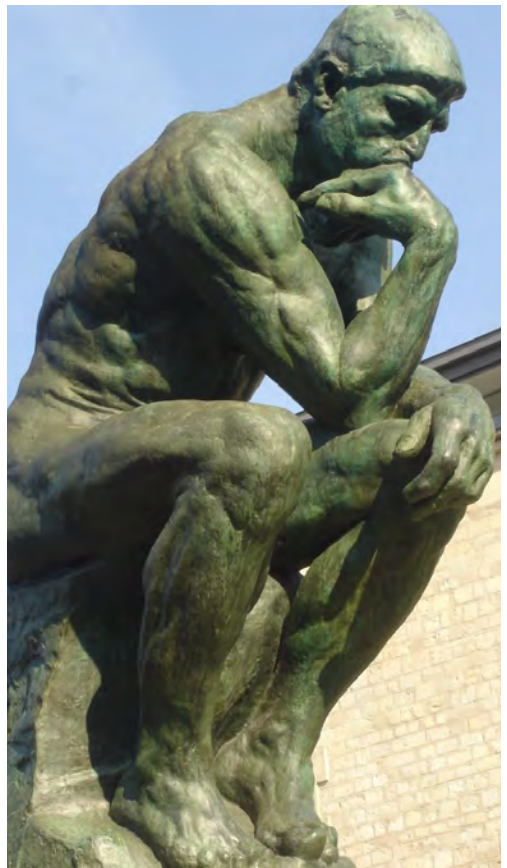
- barrister
- civil service fast streamer
- health service manager
- doctor
- nurse
- local government officer
- marketing executive
- newspaper journalist
- psychotherapist
- recruitment consultant
- ...and many more!

How will I be assessed?

100% exam at the end of the course.

What can I do to prepare?

Talk to other students who are already doing the course and ask them what they have done or wish they had done. Watch programmes and documentaries that explore the questions we ask about the world as human beings. There are many books that you can also read - speak to members of staff to get a list of ideas for this.



Psychology

BTEC
Level 3

What will I study

Ever wondered if the experiences you had before the age of five really do shape the person you are today?

Or why some people conform?

Or why people become addicted to behaviours or substances?

Or how psychology is used in the world of advertising and criminal law?

BTEC Level 3 Applied Psychology will give you an understanding of the way people think and why people behave in certain ways.

What do students do afterwards?

The qualification carries UCAS points and is recognised by higher education providers as contributing to admission requirements to many relevant applied psychology courses. When combined with other qualifications such as A-levels or another BTEC Level 3 you can progress into higher education, studying such as a:

- BSc (Hons) in Occupational Health
- BSc in Education and Child Psychology
- BSc (Hons) in Sport Psychology
- BSc in Forensic and Criminal Psychology

“Psychology expands your horizons and makes you a better, well rounded person.” -
Jack

How Will I be Assessed

58% of the course is externally assessed by means of written examination.

The remaining 48% is assignment based

What Can I do to prepare?

Read the key studies that underpin the course. These are experiments and research that have been carried out by psychologists in the past. Take an interest in the world and behaviour of people around you and develop an enquiring, open mind-set! Talk to students on the course this year or speak to the teacher.



Sociology

A-level

What will I study?

Do you want to learn about how society functions? Why do men tend to earn more money than women? Why has Britain got a higher rate of teenage pregnancy than other European Countries? Are we free or do we follow the crowd? How does the society you live in affect your life? If you think these are all interesting questions then sociology, which is the study of society, might be the course for you.

Units of study within

Sociology are:

Families and households

Education

Research methods

Crime and deviance

The Media

Theory and methods.



What do students do afterwards?

Sociology students are prepared for entry level positions in health services, non-profit organizations, law, criminal justice, and human resources. Sociology is also excellent preparation for law school and for graduate study, not just in sociology, but also fields such as public health, criminology, public policy, business, public health, social work and education. One sociology graduate even became President of the United States!

How will I be assessed?

100% exam at the end of the course comprising three exams of two hours each.

What can I do to prepare?

Watch the news, watch films watch people within your society. Ask yourself why do people react the way they do, what makes people who they are.

“Sociology is incredibly interesting and provides you with knowledge about society and factors that affect what individuals believe. The studies we learn about are intriguing and can be applicable to everyday life.” - Holly

Sport

BTEC
Level 3

SINGLE OR DOUBLE AWARD

Two year course equivalent to two GCE A-levels.

What will I study?

Are you fascinated by how the human body works? Have you ever wondered why some people can run faster, jump further or develop muscles easier than others or how the mind can influence sports performance? If you have a passion and genuine interest for sport and exercise we can set you on a path to a career in the ever expanding sport, exercise or leisure industry.

What do students do afterwards?

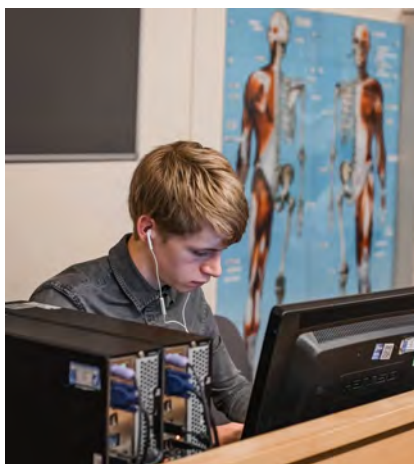
Supports progression to higher education and employment when combined with other level 3 qualifications. Students have taken the opportunity to continue their studies in sports science, PE teaching, leisure, sport psychology and physiotherapy. Students wishing to pursue a career in the Armed Services, Police, Sports Coaching or the leisure industry will find the qualification really useful.

How will I be assessed?

Nine Units to complete: six are assessed internally through assignment based work; three are set and marked externally.

What can I do to prepare?

Take a keen interest in a range of sports and exercise matters; follow related news and apps to keep abreast **of what's happening the world of sport, exercise and leisure**. Play sport on a regular basis and keep fit. Try to understand why things happen eg, the purpose of tactics or the benefits/adaptations to the body from exercise.



BTEC Sport is a subject that shows how sports performers and coaches think, analyse, perform and assess all aspects of sporting activities. This subject also covers the functions of the human body and how they work. - Mackenzie



Learning for Progress

BTEC
Level 2

What will I study?

On this course students will attend college two days a week and two of the remaining three days will be spent on an unpaid work experience placement. This course is designed to develop **student's employability skills and provide qualifications and experience in an employment area of their own choice.** This will be achieved through careers counselling, where students will map out their future career path and identify a work experience placement that is suited to their needs. This course will also enable students to re-sit their Level 2 Maths and English qualifications. In addition to this, students will complete the Level 1 BTEC IT Users qualification and have the opportunity to progress onto Level 2 is suitable. To prepare students for the workplace, all students will complete the Level 1 Award in Health and Safety in the Workplace course.

In addition to this, students may also choose to complete additional Level 2/3 qualifications that are mirrored to their chosen career paths such as:

- Award in Health & Safety in the Workplace
- Award in Fire Safety
- Award in Manual Handling – Principles and Practice
- Award in Food Safety in Catering
- Award in Emergency Paediatric First Aid
- Award in Emergency First Aid at Work



What support will I have throughout the course?

You will have the support of the Sixth Form Team to help you with any problems you may have with your work placement or studies. You will also have regular one-to-one meetings with the College careers advisor Ms Mackle to help you work out the next steps in your career journey, you can also keep in touch with her on this email g.mackle@ccwhitby.org.

What do students do afterwards?

Students can progress onto Level 3 courses once they have secured five GCSEs at Grade 4 or above or can apply for an apprenticeship.

How will I be assessed?

Level 2 GCSE

Maths and English exam.

Work experience targets.

A range of practical assessments and written/multiple choice examinations for work related qualifications.

BTEC IT Users qualification is assessed through internally assessed project work that is subject to moderation.



What can I do to prepare?

Talk to other students about their experiences and discuss different career paths with family and friends. Would a combination of Sixth Form and work related learning suit your style of learning?



I have learned new things and I'm gaining lots of experience from my work placement. I am taking many qualifications including Health and Safety. - Olivia



Foundation Learning Programme

What will I study?

Subjects include English, mathematics, physical education, life skills, ICT, Arts Award, work experience, work experience accredited qualifications, cooking and gardening,

The course consists of three days a week in Whitby Sixth Form. Two days students will take part in a work experience placement. Previous work experience placements have included construction, motor mechanics, catering, retail, care, childcare and agriculture.

What do students do afterwards?

Progression after this course is individual to the student. At the end of the course there are a range of further education options and many students continue at Whitby Sixth Form on the foundation learning programme until ready to progress further. There are options to move towards Level 2 programmes of study when ready.

How will I be assessed?

These include functional skills qualifications in mathematics and English. The work experience accredited qualifications reflects the skills gained in the workplace and in lessons, the other qualifications are based on College work.

Assessment includes a range of methods – examination, online computer tests, and workbooks.

What can I do to prepare?

Talk to other students about their experiences of the foundation learning programme. You can speak with friends and family about our different offers. Come and try a day for yourself.



Extended Project Qualification

BTEC
Level 3

“What is EPQ?”

An independent piece of work which is mainly self-guided.

You produce a research-based essay. Complete a log and give a presentation at the end.

Some taught skills sessions plus 1:1 supervisor meetings.

A topic of your choice (you don't have to know what you want to do to start this course!)

The Benefits of the EPQ

The EPQ will help you to demonstrate to both Universities and future employers that you are able to work independently. It will also help you to develop essential skills required for study at a higher level:

- working with others
- working to deadlines
- planning and management of a project
- decision making and problem solving
- presentation skills
- communication skills.

The skills that you develop through the EPQ are excellent preparation for university-level study.

Students can refer to the EPQ in their UCAS

personal statements and interview to

demonstrate some of the qualities that universities are looking for.

Another benefit of the EPQ is you don't have to revise and prepare for an exam but it will give you the same UCAS tariff as an AS exam. It can also help to further your knowledge in one or more of your examination subjects and enrich your performance in that exam.



Topics previously studied

Is it possible to eradicate fears?

Are the younger generation to blame for the extinction of traditional rural crafts?

The most influential design aspect of the international America's Cup Class 72 for the best velocity.

The 1950's – Britain's most iconic fashion decade.

What is the most effective poison to kill my brother?

Is it justified to sacrifice liberty for security?

Zara Sinclair – The Musical

Organising a charity ball

Can solar weather be predicted?

“The skills I gained during my EPQ will be invaluable at university in terms of time management and effective planning which will ensure that everything is finished by a set date.” - Kim, EPQ student.





Whitby Sixth Form
Airy Hill, Whitby,
North Yorkshire YO21 1QA

Tel: 01947 601901
www.sixthformwhitby.org